



Amala
COLLEGE OF NURSING
ACCREDITED BY NAAC WITH A GRADE

AMALA COLLEGE OF NURSING

AQAR (2023-2024)



CRITERION 4 – Infrastructure and Learning Resources

Key Indicator 4.1– Physical Facilities

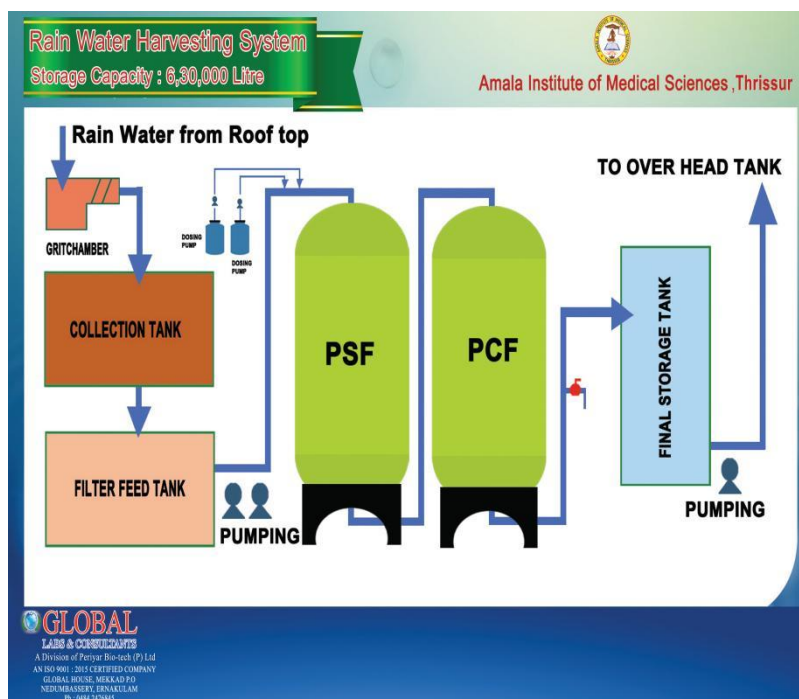
Metric No. 4.1.3- Availability and adequacy of general campus facilities and overall ambience:

SUBMITTED TO

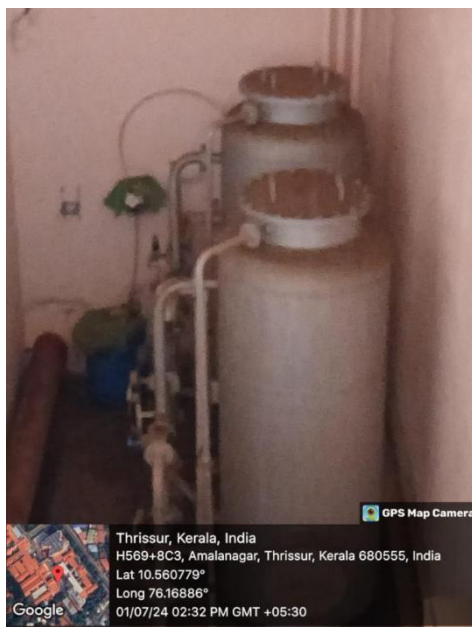


National Assessment and Accreditation Council

RAIN WATER HARVESTING



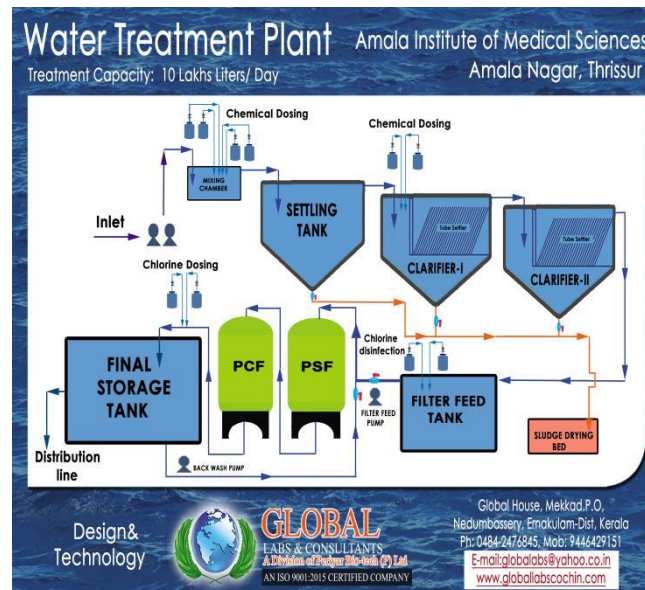
Flow diagram depicting the process of rain water harvesting



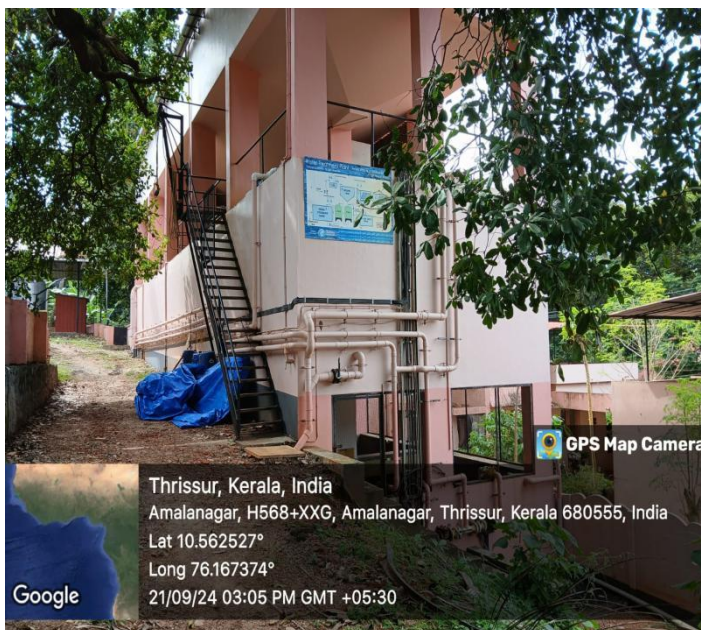
ACON, Rain water harvesting

1900

WATER TREATMENT PLANT



Flow diagram depicting the process of water treatment plant



ACON, Water treatment plant



1900

Prof. Dr. RAJEE REGHUNATH
PRINCIPAL
AMALA COLLEGE OF NURSING
AMALA NAGAR P.O., THRISSUR-680 555



AMALA COLLEGE OF NURSING

An Undertaking of Amala Cancer Hospital Society

Affiliated to Kerala University of Health Sciences & Recognized by Kerala Nurses & Midwives Council & Indian Nursing Council (Certificate No. 18-16/2893-INC)

The First Nursing College with NAAC A-Grade in the First Cycle (RAF)

Amala Nagar P.O, Thrissur - 680 555, Kerala. | Ph: 0487 230 4070 (College), 0487 230 7574, 230 4120 (Principal's Office)

amalanursingcollege@amalaims.org | www.amalanursingcollege.org



BORE WELL



ACON, Bore well ,near to Amala Ayurveda Hospital



AMALA COLLEGE OF NURSING

An Undertaking of Amala Cancer Hospital Society

Affiliated to Kerala University of Health Sciences & Recognized by Kerala Nurses & Midwives Council & Indian Nursing Council (Certificate No. 18-16/2893-INC)

The First Nursing College with NAAC A-Grade in the First Cycle (RAF)

Amala Nagar P.O, Thrissur - 680 555, Kerala. | Ph: 0487 230 4070 (College), 0487 230 7574, 230 4120 (Principal's Office)

amalanursingcollege@amalaims.org | www.amalanursingcollege.org



Prof. Dr. RAJEE REGHUNATH
PRINCIPAL

AMALA COLLEGE OF NURSING
AMALA NAGAR P.O., THRISSUR-680 555



OPEN WELL



ACON, Open well, Near to the college building



19/08

Prof. Dr. RAJEE REGHUNATH
PRINCIPAL
AMALA COLLEGE OF NURSING
AMALA NAGAR P.O., THRISSUR-680 555



AMALA COLLEGE OF NURSING

An Undertaking of Amala Cancer Hospital Society

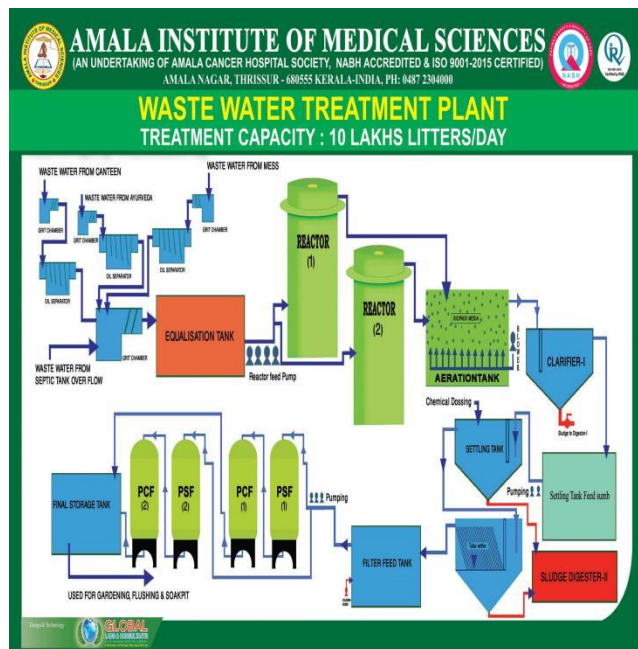
Affiliated to Kerala University of Health Sciences & Recognized by Kerala Nurses & Midwives Council & Indian Nursing Council (Certificate No. 18-16/2893-INC)

The First Nursing College with NAAC A-Grade in the First Cycle (RAF)

Amala Nagar P.O, Thrissur - 680 555, Kerala. | Ph: 0487 230 4070 (College), 0487 230 7574, 230 4120 (Principal's Office)

amalanursingcollege@amalaims.org | www.amalanursingcollege.org

WASTE WATER TREATMENT PLANT



Flow diagram depicting the process of waste water treatment plant



AMALA COLLEGE OF NURSING

An Undertaking of Amala Cancer Hospital Society

Affiliated to Kerala University of Health Sciences & Recognized by Kerala Nurses & Midwives Council & Indian Nursing Council (Certificate No. 18-16/2893-INC)

The First Nursing College with NAAC A-Grade in the First Cycle (RAF)

Amala Nagar P.O, Thrissur - 680 555, Kerala. | Ph: 0487 230 4070 (College), 0487 230 7574, 230 4120 (Principal's Office)

amalanursingcollege@amalaims.org | www.amalanursingcollege.org

Prof. Dr. RAJEE REGHUNATH
PRINCIPAL

AMALA COLLEGE OF NURSING
AMALA NAGAR P.O., THRISSUR-680 555



MAINTENANCE OF WATER BODIES



GPS Map Camera

Google

Thrissur, Kerala, India
H568+R6G, Amalanagar, Thrissur, Kerala 680545, India
Lat 10.562364°
Long 76.165805°
03/08/24 11:17 AM GMT +05:30



AMALA COLLEGE OF NURSING

An Undertaking of Amala Cancer Hospital Society

Affiliated to Kerala University of Health Sciences & Recognized by Kerala Nurses & Midwives Council & Indian Nursing Council (Certificate No. 18-16/2893-INC)

The First Nursing College with NAAC A-Grade in the First Cycle (SAF)

Amala Nagar P.O, Thrissur - 680 555, Kerala. | Ph. 0487 230 4070 (College), 0487 230 7574, 230 4120 (Principal's Office)

amalanursingcollege@amalaims.org | www.amalanursingcollege.org

Prof. Dr. RAJEE REGHUNATH
PRINCIPAL

AMALA COLLEGE OF NURSING
AMALA NAGAR P.O., THRISSUR-680 555