



**Amala**  
COLLEGE OF NURSING  
ACCREDITED BY NAAC WITH A GRADE

# AMALA COLLEGE OF NURSING

## AQAR (2023-2024)



### CRITERION 7– Institutional Values and Best Practices

#### Key Indicator 7.1–Institutional Values and Social Responsibilities

#### Metric No. 7.1.5 Water conservation facilities available in the Institution:

SUBMITTED TO

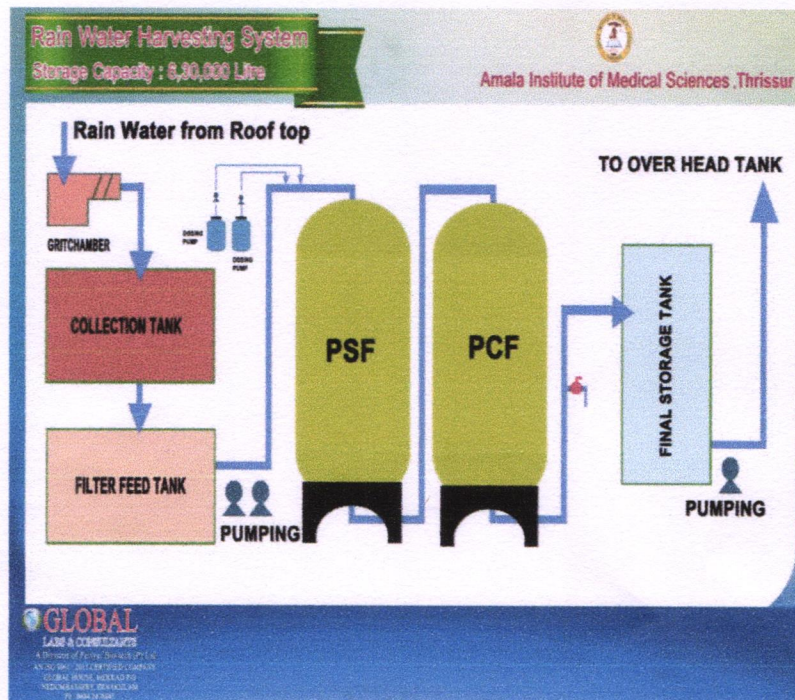


**National Assessment and Accreditation Council**

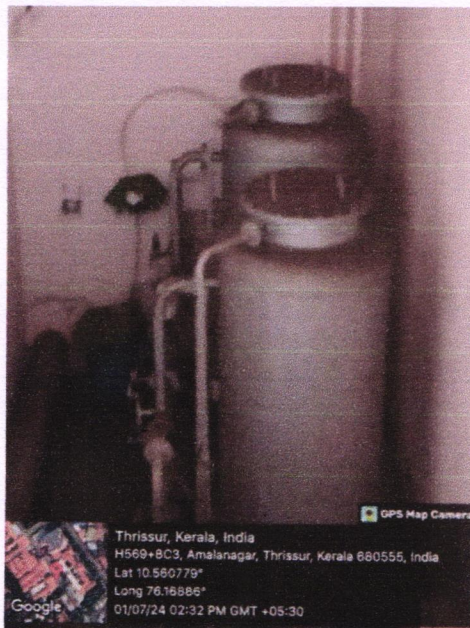
# Geotagged Photos



## RAIN WATER HARVESTING

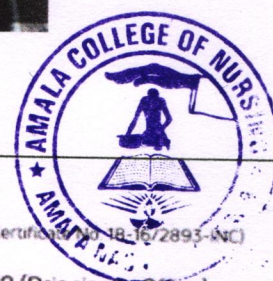


Flow diagram depicting the process of rain water harvesting



ACON, Rain water harvesting

*Lgao*







## BORE WELL



ACON, Bore well ,near to Amala Ayurveda Hospital



ACON, Bore well, near to Amala Ayurveda Hospita



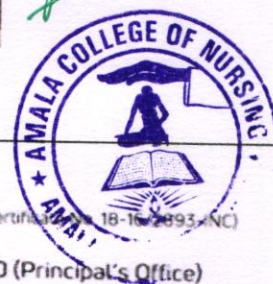
### AMALA COLLEGE OF NURSING

An Undertaking of Amala Cancer Hospital Society

Affiliated to Kerala University of Health Sciences & Recognized by Kerala Nurses & Midwives Council & Indian Nursing Council (Certificate No. 18-16-2893-INC)

The First Nursing College with NAAC A-Grade in the First Cycle (RAF)

Amala Nagar P.O, Thrissur - 680555, Kerala. | Ph: 0487 230 4070 (College), 0487 230 7574, 230 4120 (Principal's Office)  
amalanursingcollege@amalaaims.org | www.amalanursingcollege.org







## OPEN WELL



ACON, Open well, Near to the college building

*Log 1*



### AMALA COLLEGE OF NURSING

An Undertaking of Amala Cancer Hospital Society

Affiliated to Kerala University of Health Sciences & Recognized by Kerala Nurses & Midwives Council & Indian Nursing Council (Certificate No. 18-16/2893-INC)

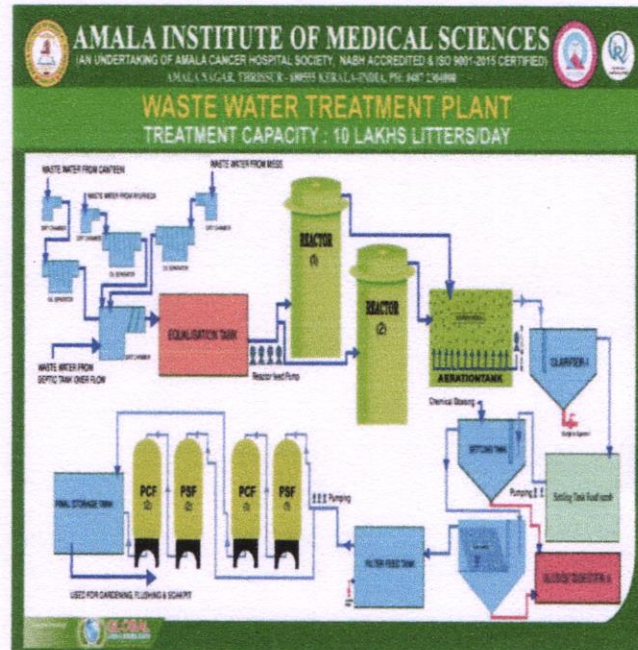
The First Nursing College with NAAC A-Grade in the First Cycle (RAF)

Amala Nagar P.O, Thrissur - 680 555, Kerala. | Ph: 0487 230 4070 (College), 0487 230 7574, 230 4120 (Principal's Office)

amalanursingcollege@amalaims.org | www.amalanursingcollege.org



## WASTE WATER TREATMENT PLANT

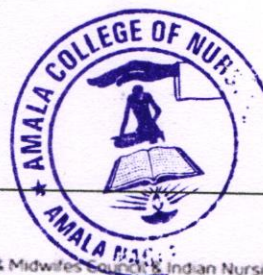


Flow diagram depicting the process of waste water treatment plant



ACON, waste water treatment plant

1920



**AMALA COLLEGE OF NURSING**

An Undertaking of Amala Cancer Hospital Society

Affiliated to Kerala University of Health Sciences & Recognized by Kerala Nurses & Midwives Council, Indian Nursing Council (Certificate No 18-16/2893-INC)

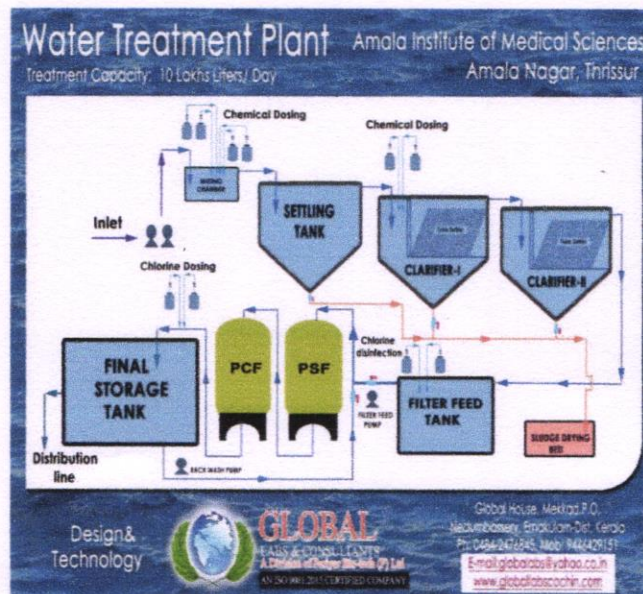
**The First Nursing College with NAAC A-Grade in the First Cycle (RAF)**

Amala Nagar P.O, Thrissur - 680555, Kerala. | Ph: 0487 230 4070 (College), 0487 230 7574, 230 4120 (Principal's Office)  
 amalanursingcollege@amalaaims.org | www.amalanursingcollege.org





## WATER TREATMENT PLANT



Flow diagram depicting the process of water treatment plant



ACON, Water treatment plant

*Kg*



### AMALA COLLEGE OF NURSING

An Undertaking of Amala Cancer Hospital Society

Affiliated to Kerala University of Health Sciences & Recognized by Kerala Nurses & Midwives Council

The First Nursing College with NAAC A-Grade in the First Cycle (RAF)

Amala Nagar P.O, Thrissur - 680 555, Kerala. | Ph: 0487 230 4070 (College), 0487 230 7574, 230 4120 (Principal's Office)

amalanursingcollege@amalaims.org | www.amalanursingcollege.org





# Amala COLLEGE OF NURSING

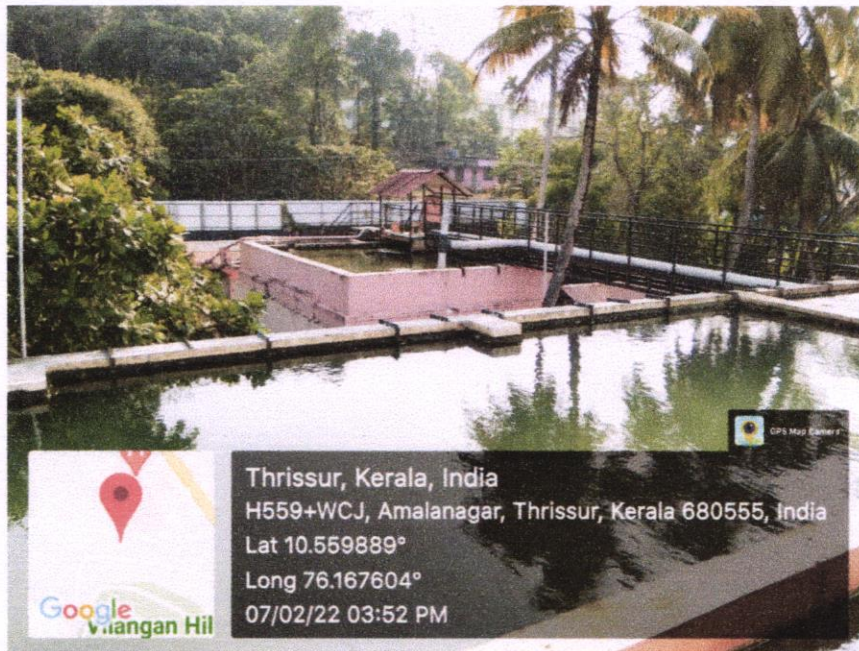
(An undertaking of Amala Cancer Hospital Society)

Amala Nagar, Thrissur – 680 555, Kerala

First Nursing College accredited by NAAC with A grade in the first cycle (RAF)

Affiliated to Kerala University of Health Sciences and recognized by Kerala Nurses and Midwives Council & Indian Nursing Council  
(Certificate No. 18-16/2893-INC)

## CONSTRUCTION OF TANKS AND BUNDS



ACON, Sedimentation tank, Water treatment plant



ACON, Clarifier, Water treatment plant



*Logu*  
Prof. Dr. RAJEE REGHUNATH  
PRINCIPAL  
AMALA COLLEGE OF NURSING  
AMALA NAGAR P.O., THRISSUR-680 555